



**elmi** Ltd.  
laboratory equipment

# DIGITAL ORBITAL SHAKERS

ALYS Labware, Lausanne  
Tel : 021 312 42 60  
Fax : 021 312 42 61  
labware@alys-technologies.com

The 'Sky Line' generation of orbital and rocking shakers is amazingly flexible, reliable and high performance line of universal laboratory equipment. Great selection of accessories and attachments allow easily accommodate shakers to different laboratory applications.

Nice design, high performance, user-friendly interface and maintenance-free non-stop operation make this line of shakers perfectly applicable to vast variety of medical, chemical, biological and other laboratories.

## DIGITALLY CONTROLLED

**DOS-10L**  
**DOS-20L**



MAX  
7Kg

**DOS-10M**  
**DOS-20L**



MAX  
7Kg

### FEATURES

- Optimal platform rotation amplitude for intensive mixing.
- Advanced stepper motor control system.
- Digital timer.
- High precision digital rotation speed controller.
- Great selection of different accessories and attachments.
- Sound notification when timer is out.
- Memory onboard for storing user settings.
- Possibility of continuous operation non-stop during days and days.

**DOS-1.5S**  
**DOS-20S**



MAX  
1.5 Kg

## SIMPLIFIED CONTROL

**S-3.02.10L**  
**S-3.02.20L**

MAX  
7Kg



### FEATURES

- Optimal platform rotation amplitude for intensive mixing.
- Simple and easy to operate controls.
- High precision digital rotation speed controller.
- Great selection of different accessories and attachments.
- Possibility of continuous operation non-stop during days and days.

**S-3.02.10M**  
**S-3.02.20M**

MAX  
7Kg



# DIGITAL ROCKING SHAKER

MAX  
5 Kg

## DRS-12

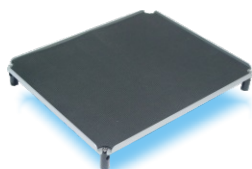


Attachable multi-level platforms

## FEATURES

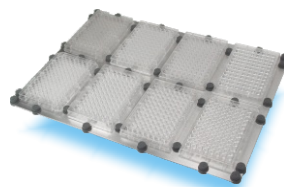
- ▶ Variable shaking angle from 1 up to 12 degrees.
- ▶ Shaking speed from 1 up to 50 shakes per minute
- ▶ Soft run stepping motor for top performance.
- ▶ Digital timer.
- ▶ High precision operation controller.
- ▶ Sound notification of timer program end.
- ▶ Memory onboard for storing user settings.
- ▶ Quiet and maintenance free mechanism insures possibility of continuous operation non-stop during days and days.

## SHAKERS ACCESSORIES



### ATTACHABLE MULTI LEVEL PLATFORM FOR DRS-12

Allows to attach several levels to the rocking platform to increase the capacity of shaker. Is very effective and handy to operate.



4x  8x 

### MICROPLATE ADAPTER

Insures maximal convenience and efficiency working with different kinds of microplates. Depending on the size of a platform accommodates up to 8 and up to 4 micropates



### UNIVERSAL ROLLER CLIPS

Very effective universal solution for fixing different flat-bottom laboratory flasks and extra high and unstable laboratory flasks.



**UNIVERSAL MAGNETIC CLIPS**  
Excellent universal solution for easy and fast fixation of any kind of flat bottom laboratory flasks and bottles. Can be used in a combination with roller clips.

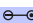


### LABORATORY FLASKS FIXATION ADAPTERS

An excellent solution to process big volumes of laboratory samples at a time.

ALYS Labware, Lausanne  
Tel : 021 312 42 60  
Fax : 021 312 42 61  
labware@alys-technologies.com

## SPECIFICATIONS

	DOS-1.5S/DOS-20S	DOS-10M,S-302.10M / DOS-20M,S-302.20M	DOS-10L,S-302.10L / DOS-20L,S-302.20L	DRS-12
Size of working space of platform:	mm 168 x 168	347 x 235	410 x 297	255 x 305
Amplitude of rotation of the platform(rocking angle):	mm(degree) 1.5/20	10 / 20	10 / 20	(1 - 12)
Type of rotation:	orbital	orbital	orbital	rocking
Time controller:	min 1-999 & timer off	1-999 & timer off	1-999 & timer off	1-999 & timer off
Speed of rotation (rocking):	RPM 50-1300/10-250	from 50 to 500 / 300	from 50 to 500 / 300	(from 1 to 50)
Environmental temperature:	°C from +4 to + 55	from +4 to + 55	from +4 to + 55	from +4 to + 55
Relative moisture of atmosphere (at the temperature of 20 °C):	% up to 80	up to 80	up to 80	up to 80
Power supply (adapter)	 (DC in 12V, 1000 mA)	(DC in 12V, 1000 mA)	(DC in 12V, 1000 mA)	(DC in 12V, 1000 mA)
Size of the device (length x width x height)	mm 193 x 170 x 70	347 x 275 x 100	420 x 310 x 100	307 x 275 x 110
Weight	kg 1,4	5,5	7,5	3,5