

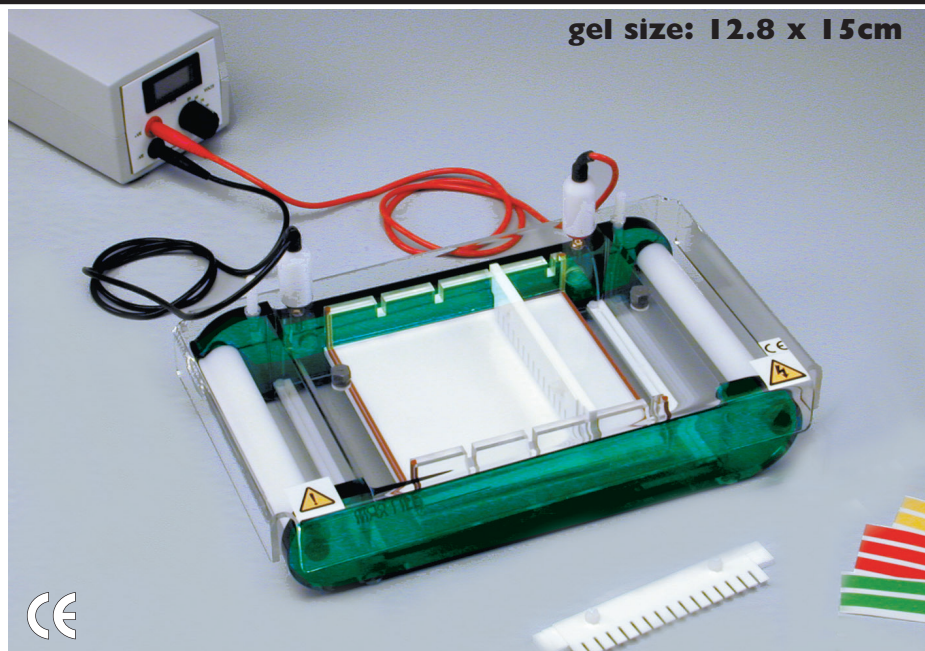
# Gel Units

ALYS Labware, Lausanne  
Tel: 021 312 42 60  
Fax: 021 312 42 61  
labware@alys-technologies.com

## MIDI Horizontal

with Removable Gel Casting Tray

- Compact size
- Low buffer volumes
- Ideal for rapid electrophoresis
- Up to 112 samples can be screened on one gel
- Ideal for analytical and preparative electrophoresis
- Buffer recirculation available as an option
- Casting Tray with four comb positions



gel size: 12.8 x 15cm

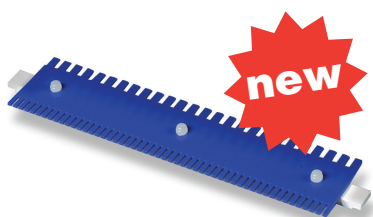
Typical Applications

Accommodates standard gels for both analytical and preparative studies of nucleic acids.

The **Midi** Horizontal Gel Unit is designed for both analytical and preparative studies of nucleic acids. These units have the same features as the Mini-Units but with the addition of buffer recirculation ports. Four comb positions allow up to 112 samples to be screened on one gel.

### Gel Casting

Scie-Plas offers three different methods of gel casting for its Mini, Mini-plus and Midi series. As standard with all sizes, **in-tank casting** without the need for tape, is possible and is shown on page 5. **Silicone casting gates** on page 6, offer a simple and effective tape-free method of pre-casting gels while the tank is being used for electrophoresis. To allow pre-casting of several gels simultaneously, a **multiple unit** shown below, allows up to three Casting Trays to be poured at one time. This option ensures a consistency in media.

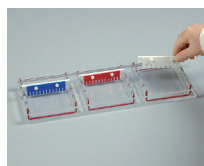


Reversible combs combine convenience with cost savings, see page 14

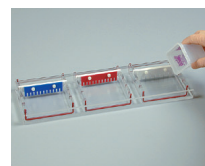
### MULTIPLE MINIGEL CASTING for Mini, Mini-Plus and Midi series



Make sure that the silicone gasket is seated evenly in the groove, with the ends flush with the top of the tray. Insert the tray so that the silicone rubber forms a tight, leak free seal with the walls of the casting unit.



Insert the appropriate comb(s) into the comb slot(s). Scie-Plas offers a wide range of combs, colour-coded for thickness



The agarose gel should be cooled to 50°C, poured into the tray and allowed to set.



When ready, remove trays from casting unit and place in running unit for immediate electrophoresis or store wrapped in clingfilm at 4°C.

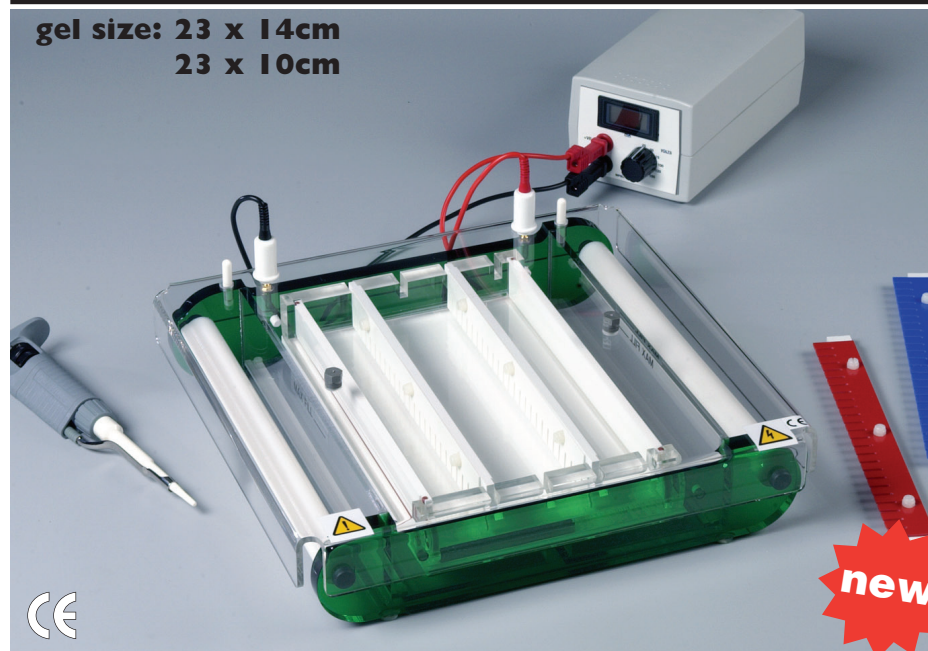
### Technical Specifications

Gel dimensions, (W x L)	Midi	12.8 x 15cm
Unit dimensions (W x L x H)	Midi	20 x 32 x 7cm
Max. sample capacity	Midi	112
Buffer volume	Midi	900ml
Combs available :		
No. of samples		10, 12, 16, 20, 24, 28
Thicknesses		1, 1.5, 2mm

### Ordering Information

<b>Midi Horizontal Gel Unit with Removable Gel Casting Tray</b>	HU13
Includes: 1 x UV Tray 12.8 x 15cm , 2 x 1mm, 16 Sample Combs, Coloured Strips & Re-circulation Ports	
Gel Casting Tray	HU13-UT
Silicone Casting Gates	HU13-SCG
Silicone Gasket, 1 metre	HU-SG
Coloured Loading Strips	HU13-CS
External Casting Unit for 2 Gel Casting Trays	HU13-CU
Buffer Recirculation Ports	HU-BRP
Replacement Pt Wire, 50cm	PT-0.2

## Wide Format MIDI Horizontal



gel size: 23 x 14cm  
 23 x 10cm

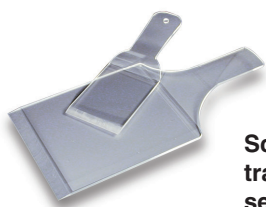
with Removable Gel Casting Tray

- Compact size
- Low buffer volumes
- Ideal for rapid electrophoresis
- Up to 200 samples can be screened on one gel
- Ideal for analytical and preparative electrophoresis
- Buffer recirculation available as an option
- Casting Tray with four comb positions

The **Wide Format Midi** Horizontal Gel Unit is also designed for both analytical and preparative studies of nucleic acids. These units have the same features as the Midi units but being wider allow a greater number of samples to be run, making the unit even more flexible. Four comb positions allow up to 200 samples to be screened on one gel.

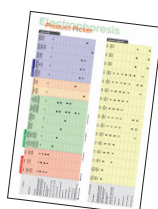
Typical Applications

**Designed for high throughput screening.**

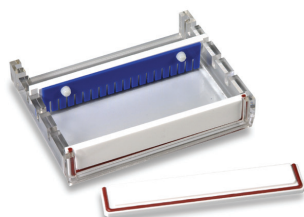


**Scoops for safe transfer of gels, see page 13**

need help choosing the most suitable product for your application?  
 - see facing page 1



### GEL CASTING for Wide and Long Format Units



Gel casting is simple using integral gates. The silicone rubber gaskets effectively seal the tray without the need for tape. Position with gasket facing outwards as shown.

**custom build products available**  
 please call for a quotation

**for comb specifications and ordering details see pages 14/15**

### Ordering Information

<b>Wide Format Midi Horizontal Gel Unit with Removable Gel Casting Tray</b>	<b>HU13W</b>
Includes: 1 x UV Tray 23 x 14cm with gates, 2 x 1mm, 25 Sample Combs, Coloured Strips & Re-circulation Ports.	
Gel Casting Tray 23 x 14cm (4 Comb Positions)	HU13W-UT14
Gel Casting Tray 23 x 10cm (4 Comb Positions)	HU13W-UT10
Gel Casting Gates	HU13W-CG
Cloured Loading Strips	HU13W-CS
Buffer Recirculation Ports	HU-BRP
Replacement Pt Wire, 50cm	PT-0.2

### Technical Specifications

Gel dimensions, (W x L)	Wide Midi	23 x 14cm 23 x 10cm
Unit dimensions (W x L x H)	Wide Midi	30 x 30 x 6.5cm
Max. sample capacity	Wide Midi	200
Buffer volume	Wide Midi	800ml
Combs available : No. of samples Thicknesses		12, 16, 20, 25, 28, 40, 50 1, 1.5, 2mm

# Horizontal Gel Units

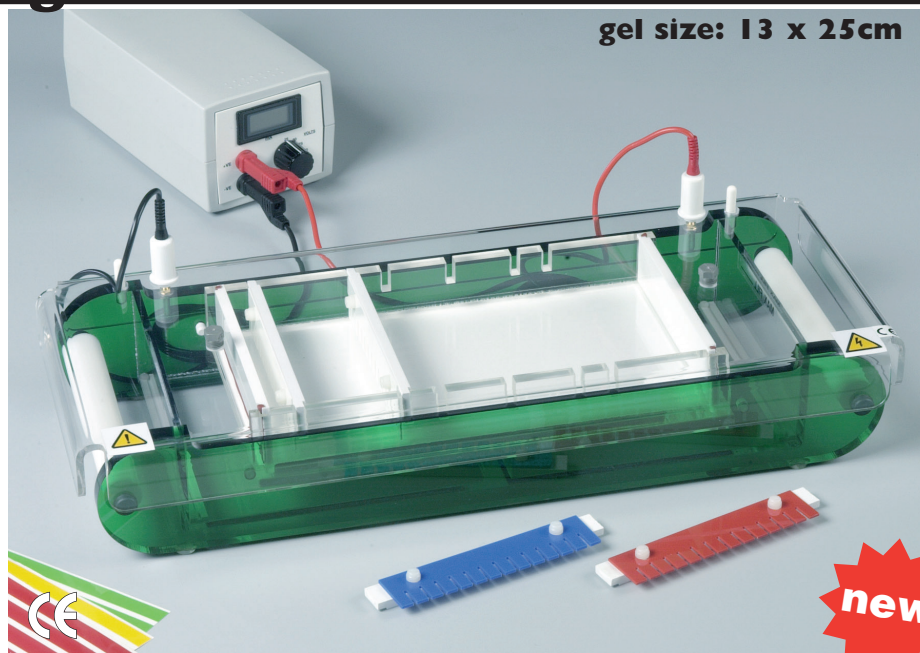
ALYS Labware, Lausanne  
 Tel: 021 312 42 60  
 Fax: 021 312 42 61  
 labware@alys-technologies.com

## Long Format MIDI Horizontal

with Removable Gel Casting Tray

gel size: 13 x 25cm

- Compact size
- Low buffer volumes
- Ideal for rapid electrophoresis
- Up to 112 samples can be screened on one gel
- Ideal for analytical and preparative electrophoresis
- Buffer recirculation available as an option
- Casting Tray with six comb positions



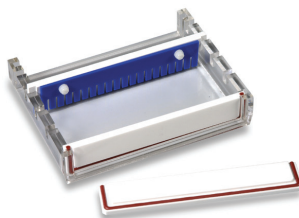
Typical Applications

Designed for high resolution analytical research.

The **Long Format Midi** Horizontal Gel Unit is designed for both analytical and preparative studies of nucleic acids. The longer running tray provides the researcher with the ability to run samples over a 25cm length for high resolution analytical research, without the use of excessive gel volumes.



**GEL CASTING** for Wide and Long Format Units



Gel casting is simple using integral gates. The silicone rubber gaskets effectively seal the tray without the need for tape



Fluorescent gel rulers, see page 13

### Technical Specifications

Gel dimensions, (W x L)	Long Midi	13 x 25cm
Unit dimensions (W x L x H)	Long Midi	18 x 46 x 8cm
Max. sample capacity	Long Midi	112
Buffer volume	Long Midi	1200ml
Combs available : No. of samples Thicknesses		8, 10, 12, 16, 20, 24, 28 1, 1.5, 2mm

### Ordering Information

<b>Long Format Midi Horizontal Gel Unit</b> with Removable Gel Casting Tray	HU13L
Includes: 1 x UV Tray 13 x 25cm with gates, 2 x 1mm, 14 Sample Combs, Coloured Strips & Re-circulation Ports.	
Gel Casting Tray	HU13L-UT
Gel Casting Gates	HU13L-CG
Coloured Loading Strips	HU13L-CS
Buffer Recirculation Ports	HU-BRP
Replacement Pt Wire, 50cm	PT-0.2