



## **Powderscan P2000 Laboratory system for measuring the quality of powder products.**

---

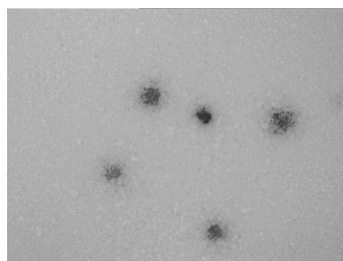
The **P2000 POWDERSCAN LABORATORY SYSTEM** gives users the ability to detect the number of black and brown specks as well as the percentage of black and brown specks in the sample.

The **P2000 POWDERSCAN** system uses the same intelligent algorithm as the **P4000** on-line system, therefore giving manufactures the ability to use the same information both on-line and in laboratory environments. The specially developed algorithm and lighting system, means daily calibration is not required.

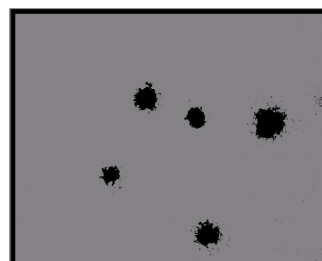


The **POWDERSCAN P2000** software has a user-friendly interface while still giving the operators all the necessary information that they require from the scanned sample.

A live image and processed image are displayed on the screen allowing the user to see the sample analysis on **POWDERSCAN P2000** in real time.



**Live image**

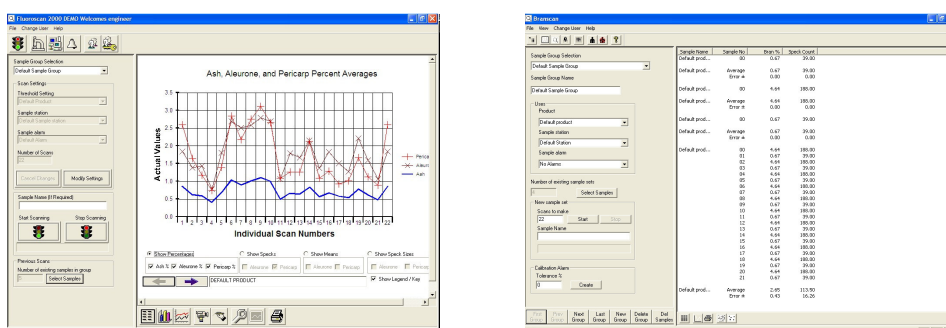


**Processed image**

Captured on **Powderscan P2000** laboratory system

## Technical details

- The software display incorporates the live feed from the camera allowing users to view the sample in real time.
- Log-in facility with administrator controlled passwords and user rights
- Visual alarm incorporated for indicating product deviations from set parameters
- User has the ability to select which results should be viewed
- Results can be exported to a file in excel format and graphs can be printed
- Components: Measuring Station, PC, Monitor, Printer and necessary cables.



*The results shown in graphical form and numeric value*

Dimensions of Measuring Station:

Height 380mm  
Width 285mm  
Depth 460mm

Minimum PC Specification:

P3 2.0 GHz, 128MB Ram,  
5Gb Hard Disk,  
1 X PCI Slots.

PC Operating System:

Windows 98 SE, Windows 2000,  
Windows XP

Monitor Type:

CRT or LCD with SVGA cable

Screen Resolution:

1024 X 768 pixels

Printer:

Any printer can be connected

Weight:

Measuring Station: 12.5 Kg

**Branscan Limited**

**[www.branscan.com](http://www.branscan.com)**

ALYS Labware, Lausanne

Tel : 021 312 42 60

Fax : 021 312 42 61

[labware@alys-technologies.com](mailto:labware@alys-technologies.com)