



# PURICARE™

## BEDDING DISPOSAL STATIONS



ALYS Labware, Lausanne  
Tel : 021 312 42 60  
Fax : 021 312 42 61  
[labware@alys-technologies.com](mailto:labware@alys-technologies.com)



Protecting Your  
Lab Animal Environment

**LABCONCO**



## PuriCare™ Bedding Disposal Stations

The PuriCare Bedding Disposal Station provides a convenient, mobile system for disposing of used small animal bedding. Three-foot wide station fits easily in cramped spaces. Its spacious access opening provides for free range of motion and its large receptacle accommodates large rat or hamster cages as well as smaller mice cages. The large waste container holds 40-gallon standard-size trash bags that require less frequent disposal. The platform on casters locks securely to the waste container for easy transport.

The PuriCare Bedding Disposal Station protects the operator from airborne particulates generated during bedding disposal operation. Room air is drawn into the front of the enclosure, preventing aerosols from escaping into the room. Before leaving the enclosure and returning to the room through the top of the enclosure, 100% of the air passes through a prefilter to trap large particles and then through an exhaust HEPA filter, protecting the environment. A top-mounted, disposable activated carbon and alumina exhaust filter removes odors and other gaseous contaminants.



\*NSF International (formerly National Sanitation Foundation)



## Features & Benefits

**Type 304 stainless steel interior sides, back, upper panel, rear baffle and work surface** resist corrosion.

**Aerodynamic stainless steel air foil** directs inflow air into the enclosure to ensure containment.

**Rear baffle** optimizes airflow and distributes air evenly across the work area.

**Interior upper panel** protects the prefilter and HEPA filter from possible damage from direct contact with animal cages inside the enclosure.

**Large 12" square receptacle** in work surface has extruded plastic trim ring to cushion cages as they are emptied. The trim ring may be easily removed for replacement.

**Large 40 gallon, industrial-strength, NSF-Listed waste container** is made of durable, low density polyethylene. The waste container holds standard liners for economical, easily available replacement. Epoxy-coated tubular steel guides keep the waste container upright and positioned over the receptacle.

**High density polyethylene platform with 3" diameter casters** supports the waste container for easy transport. A 1/8 turn of the waste container locks it securely to the platform.

**Large 34.5" wide x 23" high access opening** accommodates various rodent cage sizes and allows for free range of motion.

**Low vibration ensures quiet operation.**

**Large 5" diameter, non-marking polyurethane casters** allow the station to be transported easily. Engaging the toe brakes prevents the station from moving. Stainless steel bearings are quiet and corrosion-resistant.

**Two-light filter condition indicator** monitors differential pressure across the prefilter and HEPA filter. A green light indicates normal filter condition. An amber light indicates that service is required.

**Front-mounted light and blower switches** are easily accessible.

**99.99% efficient HEPA filter traps allergens.**

**Economical, disposable exhaust prefilter** traps large particles to extend HEPA filter life. The prefilter is located above the upper interior panel, which is held in place with magnetic catches that allow for quick access without tools.

**Top-mounted, activated carbon and alumina exhaust filter** adsorbs odors, low molecular weight contaminants and other gases present in the exhaust airflow. The filter is easily accessible from the front of the enclosure for replacement.

**Variable speed blower with solid state control** is sized for low power consumption.

**Exterior is durable glacier white epoxy-coated, 18 gauge steel.**

**Nominal inflow velocity of 50-60 feet per minute (fpm).**

**20-watt fluorescent light** illuminates the interior and is accessible from the front for replacement.

**ETL\* listed** (115 volt, 60 Hz model). Conforms to UL Standard 3101-1 in the U.S. and is certified to CAN/CSA C22.2 No. 1010.1-92 in Canada.

**CE\* mark** (230 volt, 50 Hz model). Conforms to the CE (European Community) requirements for electrical safety and electromagnetic compatibility.

**Full three year limited warranty on parts and labor:**

**Prewired** for operation on 115 volts, 60 Hz or 230 volts, 50 Hz. 115 volt model includes 10' 3-wired cord and plug. 230 volt model includes 10' 3-wire cord. Plug is required.

**Overall dimensions:** 35.75" wide x 29.25" deep x 70.55" high.

**Interior dimensions:** 34.25" wide x 28.00" deep x 23.00" high.

**Shipping weight** 400 lbs. (182 kg)

*\*pending*

## Ordering Information

Catalog#	Description
<b>3840000</b>	PuriCare Bedding Disposal Station, for operation on 115 volts, 60 Hz
<b>3840020</b>	PuriCare Bedding Disposal Station, for operation on 230 volts, 50 Hz

ALYS Labware, Lausanne

Tel : 021 312 42 60

Fax : 021 312 42 61

labware@alys-technologies.com



## Accessories

**Replacement 40 Gallon Waste Container:**

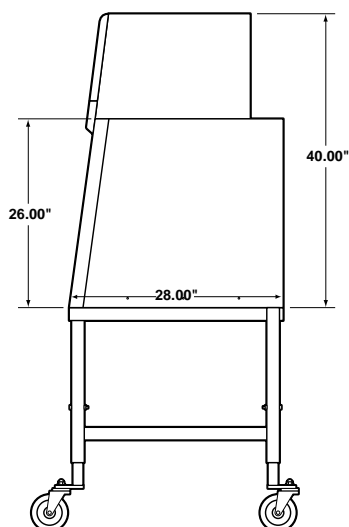
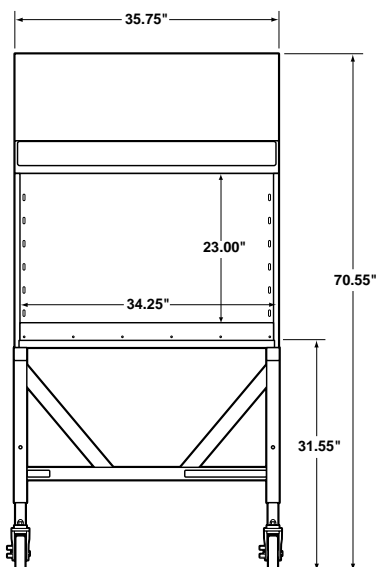
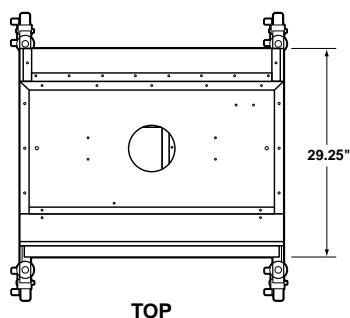
**Replacement Waste Container Platform with Casters.**

**3796201 Replacement Activated Carbon with Alumina Exhaust Filter:**

Granular activated carbon and impregnated alumina media adsorbs odors, pollutants and light gases.

**Replacement Prefilter:**

## Dimensional Data



ALYS Labware, Lausanne  
Tel : 021 312 42 60  
Fax : 021 312 42 61  
[labware@alys-technologies.com](mailto:labware@alys-technologies.com)



Labconco Corporation • 8811 Prospect Avenue • Kansas City, MO 64232-2696  
800-821-5525 • 816-333-8811 • FAX 816-363-0130  
E-MAIL [labconco@labconco.com](mailto:labconco@labconco.com) • HOME PAGE [www.labconco.com](http://www.labconco.com)



4-55-11/02-Sun-2M-R2