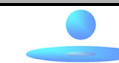


# VILBER LOURMAT

Visualization   Image acquisition   Gel analysis

Doc-Print  
Photo-Print  
**Bio-Print**  
Darkrooms



**ALYS Technologies**

Labware business unit

## Optical zoom and UV/IR filter

Also Syber Green filter available

## Darkrooms

Compact and rigid, they make possible to work in daylight in a small space, while protecting the user from UV irradiation.

## UV table

Single or dual wavelength table with Ondulex reflector for better light homogeneity. Unlimited filter life in 312 nm.

## CCD camera

High sensitivity CCD monochrome camera with integration time / real time mode.

## Monitor

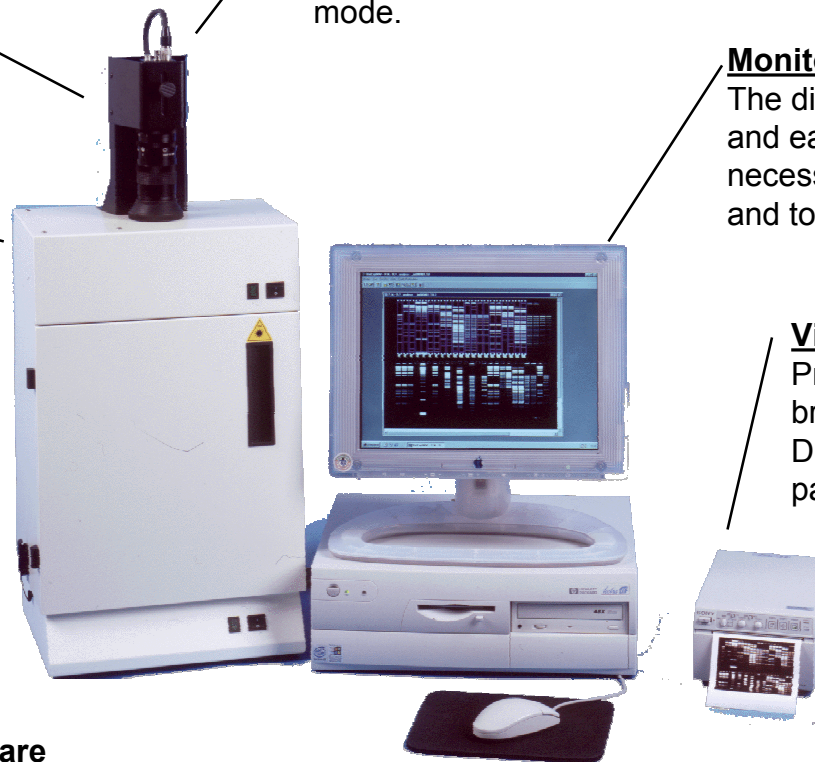
The displays of the functions are clear and easy-to-use. Just few clicks are necessary to modify the integration time and to save the image.

## Video Printer

Provides high quality of prints on a bright long time lasting paper. Directly connected to the control panel : no computer required.

## Bio-Capt software

Complementary software for image treatment and analysis : MW, volume, area and intensity.



**BIO-PRINT**

ALYS Labware, Lausanne

Tel : 021 312 42 60

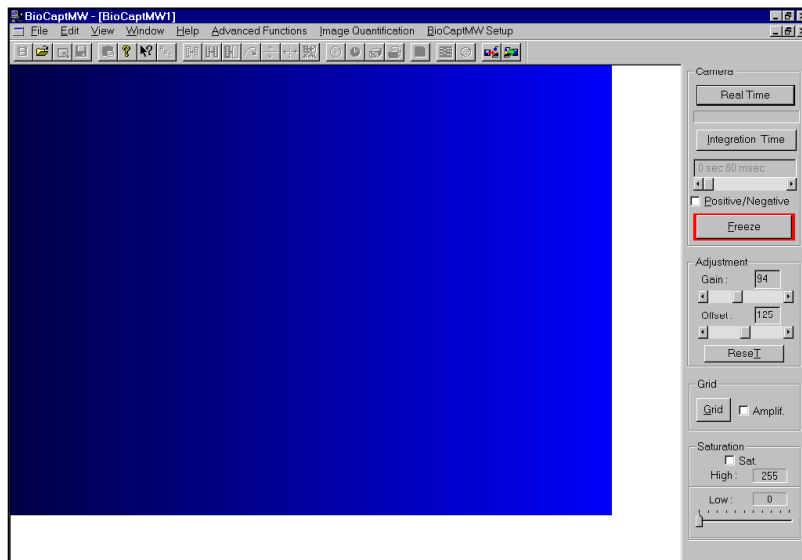
Fax : 021 312 42 61

labware@alys-technologies.com

- Doc-Print
- Photo-Print
- Bio-Print**
- Darkrooms



## USER FRIENDLY SOFTWARE



Bio-Capt software for image acquisition and image analysis

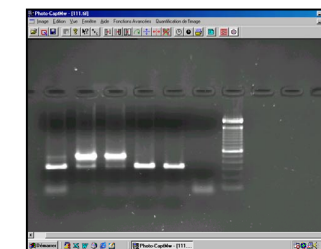
## SATURATION CONTROL



A saturated image creates quantification error when studied by an image analysis software. Photo-Print system indicates to the user if the image is saturated and then suggests to adjust the integration time.

## COMPLEMENTARY SOFTWARE

Bio-Print is supplied with a user-friendly software enabling image treatment and gel analysis. Analysis includes molecular weight volume, area, and intensity calculation. It also includes colony counting. Image can be saved under 10 different formats including TIF, Jpeg and Mac format.





## PRODUCT SPECIFICATION

### ■ Imaging process control

- . Computer
- . Integration time control
- . Output for video monitor
- . Output for video printer
- . Camera input
- . Power supply of the camera

### ■ Camera and optics

- . Monochrome CCD camera with integration time
- . Active elements : 752 (H) x 582 (V) = 437 664 pixels
- . Zoom 12,5 x75/1,8
- . UV/ IR interference filter
- . Extra lens 1D

### ■ Software

- . Bio-Capt is a complementary software supplied with Bio-Print. This software does not require an additional card to plug in the computer.
- . Image catalog
- . Calculation of MW
- . Calculation of volumes
- . GLP file
- . Colony counting

## ACCESSORIES

<b>Computer</b>	<b>Central unit Pentium III (Please, consult us for specifications)</b>
<b>F-520 M49</b>	<b>Camera Syber Green filter</b>